



# CLOVER CHRONICLES

March 2019

Isabella County

## Inside this issue:

Club Corner	2
Small Animal News	3
Scholarship Opportunities	4
Shooting Sports Kick-Off Event	5
4-H Ambassadors	6
Statewide Calendar of Events	7
Statewide News	8
PEP Meet & Greet	9
Bee Keeping Club	10
Junk Drawer Robotics	11
Sheep Workshop	12
Crafting Day	13
Calendar	14

## Dairy Feeder Weigh-In

Saturday, March 9, 2019  
8:30 a.m. - 11:30 a.m.  
Isabella County Fairgrounds



Animals cannot weigh over 250 lbs. and must be:

- One of the following breeds: Ayrshire, Brown Swiss, Guernsey, Holstein, or Jersey
- Castrated & Dehorned

It's required that by Fair, every feeder must have a RFID tag (radio frequency identification) in their ear. If you have any questions, contact Mike Lattimer at (989) 513-7839.

## Fair Camping Sign-Up

Sign up for new campers will be Saturday, April 27 at the Fair Office from 9 a.m. - 12 noon. If you camped at the fair in 2018 and would like to change sites, you must have paid for your 2019 camping, come to the fair office or call on Friday, April 26 between 9 a.m. and 12 noon to see what is available. Camping cost is \$150.00 for the week, from Friday, July 19 after 1 pm through July 27 (must leave by 1 pm on July 28). Early campers \$30 per night. For more information, contact Deb Acker at 989-400-1082 or [isabellacofair@yahoo.com](mailto:isabellacofair@yahoo.com).

## 4-H Exploration Days

June 19-21, 2019 at Michigan State University

4-H Exploration Days is an annual state youth conference that is open to all youth ages 11-19, by January 1. This event is meant to be a learning experience that will instill self-esteem, decision-making skills, independent thinking and leadership skills. The full time participant fee is \$220 which includes meals, lodging, and a t-shirt. 4-H Council will pay half the fee for full time registration. We also have a limited number of \$40 scholarships available, but youth have to fill out an application.

Registration begins on March 19 and sessions fill up VERY fast, so turn in your registration forms to the Extension office as soon as possible. A \$70 deposit is due at the time of registration.

4-H EXPLORATION DAYS  
50TH ANNIVERSARY



more to explore  
MICHIGAN STATE UNIVERSITY



Protected Under  
18 U.S.C. 707

## CLUB CORNER

**Aim High** - Club members are planning to decorate cookies at our March meeting for Commission on Aging's meal program. We will also be coordinating donations from our families and sharing them with the local food pantry. Members were reminded that May 1 is the deadline for owning their small animals, and it is a good idea to start organizing a fair project list.

**Barn Yard Kids** - Signed up for Maple Syrup Festival - taking two time slots this year! Discussed dairy feeders - selection, weigh-in, winter health. Discussed broiler project, as well as lining up any other small animals or swine before the deadlines. Discussed options for our March meeting, lady Spartan's basketball game, as well as Exploration Days. Mallory discussed PEP and encouraged volunteering as a helper or with horses.

**Canine Clovers** - In February we had Amy Tickle from Four Paws Rehabilitation, demonstrate physical therapy on an injured dog. She also taught us warm up & cool down exercises for our dogs. That meeting, we learned about how dogs communicate with their body and how to best approach a dog.

**Country Neighbors** - In February we talked more about the petting zoo at the Maple Syrup Festival and what animals we are going to have. We also discussed doing a bake sale at the festival to raise more money for parking passes. We also talked about horse shows we are going to be working at. There were no new members this month.

**Evergreen** - This February we did not have an official meeting. Instead our club chooses to use February as the time to host our largest annual fundraiser, a spaghetti dinner for the community. This year we decided to move the location of the spaghetti dinner from the Rosebush United Methodist Church to the newly renovated St. Henry's Parish Center. This change worked wonderfully and provided more room for guests to sit. The spaghetti dinner was a success again this year. Along with the dinner, our club participated in our chosen fun day, ice skating at the I.C.E. Arena. This activity was new this year and gave our members a chance to socialize with one another.

**Pony Creek** - For our February meeting we reminded people about the MSU Women's basketball game scheduled for February 24. The dairy feeder weigh-in requirements were talked about for all members planning and showing a dairy feeder. Those who show small animals were told about the Small Animal Association Meeting. After the meeting concluded we were shown a string art demonstration for those who might be interested in doing a craft for 4-H.

## Attention Fair Superintendents

If you have any class changes for your project area in the fair book, please contact Lisa Filhart (lfilhart5@att.net) by March 15.

## 4-H Camp Clean-Up

Saturday, May 4

Sunday, May 19

10 a.m. - 2 p.m.

Please bring work gloves, rakes, tarps, leaf blowers, staple guns, hammers, extra people!

Hotdogs, chips and drinks will be provided.  
RSVP to the Extension office by May 1.

## Shooting Sports Instructors Needed

We are looking for volunteer leaders to become certified as 4-H Shooting Sports instructors in archery, rifle, muzzle loader, and shotgun.

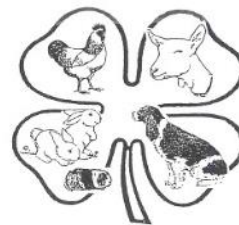
You will need to attend the April 26 - 28, 2019 workshop at Kettunen Center, in Tustin. At the workshop you will learn safe and proper use of guns and archery equipment that you can teach the youth.

Please call the Extension office if you are interested or for more details.

## Attention 4-H Seniors

Any 4-H high school senior that would like to wear 4-H Honor Cords at their graduation ceremony, please contact the Extension office by April 15 to reserve your honor cords. There will be a \$15 fee for the cords that WILL be refunded upon return of the cords in good condition to the office. Those seniors who wish to keep their honor cords may purchase them for the same amount.

## SMALL ANIMAL NEWS



- **Goats that will be entered in the small animal auction at the fair MUST have a scrapie tag BEFORE weigh-in.** It is a State mandate, and if your auction goat does not have a scrapie tag, you will not be allowed to sell. ALL goats must have some identification -- either the scrapie tag or a tattoo for those not in the auction. Goat weigh-in (for wethers only) is May 11 from 10 a.m. - 12 p.m. in the small animal barn at the fairgrounds.
- If you do not already have your small animal purchase arranged, you should do so now. For example, there are only a couple of rabbit shows before the May 1 deadline and if you haven't placed an order or made contact with someone, it may be too late to get the breed you would like to have. If you wait until April 15 or later, it will be very difficult to have your animal(s) by May.
- Reminder, if you live outside of Isabella County and plan to sell in the small animal auction, you will need approval from the Small Animal Association. Plan to attend their next meeting on Thursday, March 21 at 7:00 p.m. at the Isabella County Building. If you have already met with the Small Animal Association to sell in the auction and were approved, you do not have to do it again.
- Rabbit members - when shopping for your fair animal, it is beneficial to work with a reputable breeder; someone who guarantees their animals. We suggest you not purchase your rabbits from pet stores. Take your breed standard when you go shopping so you can have a guide for finding a good representation. For instance, make sure a Mini Rex doesn't have too long of ears; a Dutch doesn't have a split stop or cheek color into the mouth; any of the lop breeds need to have a correct crown; etc. You need to purchase a rabbit with a full pedigree. Only first year members are allowed to have a mixed breed rabbit, which does not mean a recognized breed with disqualifications.

### Broiler Chick Orders

Time to order your broiler chicks! Cost will be \$2.02 per bird if we are able to order 100 birds, this includes shipping. Orders need to be placed at the Extension office by April 26.

### Crafting Day

Saturday, April 27, 2019

A rep from a crafting company is offering an event similar to a scrap booking retreat. Participants register for "space" to work on their choice of project, and all other details of the day are covered. You will have a six-foot table, electricity, comfortable atmosphere, and food all day long. She will also provide one-on-one instruction for a couple of items/techniques and free gifts as well. She is donating all profits from the day to the Fair Board's Building project. See the flier on page 12 for more details. We hope you will plan to participate in this fun event that will help you make progress on a specific project and support the ongoing building project at our fairgrounds as well.

### 4-H Goat Expo

Saturday, April 13, 2019  
Anthony Hall, East Lansing

For youth ages 8 - 19. Cost is \$6 per participant, \$4 per contest. Contests include Quiz Bowl, Breed Judging, Skill-a-thon, Creative Writing, Cookery & Foods, and much more! For more information, visit:

<https://events.anr.msu.edu/2019goatexpo/>

### Tractor Supply Spring Paper Clover Promotion

March 27 - April 7, 2019

Help is needed for the spring Tractor Supply Company (TSC) Paper Clover Campaign. 4-H supporters can purchase a paper clover at TSC stores for \$1 to support their local 4-H program.

We are asking members, families, and clubs to help promote the event at our local Tractor Supply Store. Try displaying your record books or projects! Contact the Extension office if you or your club are interested in participating in the promotion at the store.

# SCHOLARSHIP OPPORTUNITIES

## **Isabella County 4-H Scholarship**

Isabella County offers two \$500 scholarships to 4-H members or former members each year. The scholarship recipient must be enrolled at an institution of higher learning and have been involved with 4-H in Isabella County. The scholarship is not limited to college freshmen.

To get an application, click here: [Isabella County 4-H Scholarship](#) or you may pick one up at the Extension office. Applications are due back to the office by April 20. The scholarship recipients will be notified by May 15.

## **Kathryn Methner Fike Scholarship**

For high school seniors and current college students. Thank you to the family of Kathryn Virginia Methner Fike for establishing a \$1000 scholarship in her name to benefit 4-H members in Isabella County.

Kathryn Virginia Methner Fike was born on the farm of her parents in northeast Wise Township, Isabella County on Nov 21, 1918. Except for a few winters in Florida, she spent all most 96 years within 5 miles of her birthplace. She married Lester Fike on March 29, 1936 and spent over 60 years on what became the Fike Centennial Homestead. In her childhood years, she was a member of a 4-H sewing club lead by her mother, Daisy Methner. After having children of her own, she became a leader, too. She served in this capacity for many years. Kathryn took great pride in the accomplishments of her children, grandchildren, and great grandchildren in their 4-H activities.

4-H has been a top priority in Kathryn's family for 5 generations and so it is with pride that her family is honoring Kathryn's many years of dedication to 4-H education in Isabella County with this scholarship.

Application is available at: [https://www.canr.msu.edu/isabella/isabella\\_county\\_4\\_h/newsletters-and-forms](https://www.canr.msu.edu/isabella/isabella_county_4_h/newsletters-and-forms)

## **Attention ALL 4-H & FFA Members**

Has 4-H made an impact on your life? Do you want to share your 4-H experiences with others, and get more involved? If you answered "yes" to these questions, you should apply to be a 4-H Ambassador! You will have a chance to work closely with the 4-H staff, meet new people, have GREAT experiences, and earn scholarship money all while representing Isabella County 4-H!

Application packets for the 2019 Ambassador Team will be available at the Extension Office on Wednesday, April 3. This program is open to *all* Isabella County youth, ages 8 - 19, male and female, who have participated in 4-H for FFA for at least two years (including Cloverbud participation). There will be a junior and senior division.

The application packet consists of a questionnaire sheet, leader recommendation form, and an informational page. Deadline for submitting these documents is May 1, by 4:00 p.m. The information will be reviewed and interviews will be held June 30. Each applicant will be required to prepare a visual aid of their choosing which they will present during the interview. The panel of evaluators will ask some questions to get to know the applicant better. Once the team is chosen, introductions to the 4-H community will be made at our annual Fair Kick-Off Event on July 14 (tentative date). More details for these events will be shared in future newsletters, but please put these dates on your calendar.



# 4-H Shooting Sports Spring Kickoff Event



The Michigan 4-H Shooting Sports program teaches members safety and shooting techniques for shotgun, rifle, air gun, muzzle loading and archery. They learn how to handle firearms responsibly for target practice and hunting and learn respect for the natural environment.

**Where: Isabella County Sportsmans Club** ( 2872 W. Millbrook Rd, Winn )

**When: Saturday, April 6 – 10 A.M. - 1 P.M.**

**Register: MSU Extension at (989) 317-4079**



**COME JOIN  
US FOR**  
DNR  
Crafts  
Games  
Concession Stand



Safari Club Sensory Trailer

Teen Demonstrations in all Disciplines



**MICHIGAN STATE  
UNIVERSITY**

**Extension**

MSU is an affirmative-action, equal-opportunity employer. Michigan State University Extension programs and materials are open to all without regard to race, color, national origin, gender, gender identity, religion, age, height, weight, disability, political beliefs, sexual orientation, marital status, family status or veteran status. Accommodations for persons with disabilities may be requested by contacting the MSU Extension office at (989) 317-4079 at least 5 days prior to the scheduled event to ensure sufficient time to make arrangements. Requests received after this time will be met when possible.



# 4-H AMBASSADOR TEAM ACTIVITIES

The 4-H Ambassador Team has been busy appearing in parades and helping at other annual events, including the Tractor Supply Clover Campaign and Christmas Outreach. Recently, they spent a few hours making fleece tie blankets, Valentine greeting cards and fleece scarves for local nonprofit organizations. The team is planning to volunteer at Clothing Inc, the Shepherd Maple Syrup Festival and other events as they can.



# STATEWIDE CALENDAR OF EVENTS

## Registration available for the 4-H Animal & Veterinary Science Camp



The 4-H Animal & Veterinary Science Camp is now accepting applications through April 3.

This five-day pre-college program held at Michigan State University is open to 4-H members between the age of 13 and 17.

Youth will explore fields related to animal and veterinary medicine as well as participate in numerous hands-on learning activities.

Learn more and register today at [https://www.canr.msu.edu/4\\_h\\_animal\\_veterinary\\_science\\_camp/](https://www.canr.msu.edu/4_h_animal_veterinary_science_camp/).

## 4-H Events and Workshops

March 1-April 30: JOANN's Clover for Kids Campaign

*Local JOANN stores, throughout Michigan*

Support Michigan 4-H by visiting your local JOANN store from March 1 – April 30 and purchasing a clover at the register for either \$1 or \$4.

<https://www.canr.msu.edu/events/joann-s-clover-for-kids-campaign>

March 17: 4-H STEAM Sunday—China Art

*Ingham County Fairgrounds, Mason*

Learn about Chinese culture through an art exchange program. You will look at and learn about art created by students in China before creating your own art to send back.

<https://www.canr.msu.edu/events/4-h-steam-sunday-china-art>

March 26: 4-H Parliamentary Procedure Training

*Muskegon County MSU Extension Office, Muskegon*

This training is designed for both 4-H members and volunteers who want to learn more about parliamentary procedure and how it can be used in their 4-H clubs.

<https://www.canr.msu.edu/events/muskegon-county-4-h-parliamentary-procedure-training>

March 27-April 7: Tractor Supply Co. Paper Clover Campaign

*Local Tractor Supply Co. stores, throughout Michigan*

Visit your local Tractor Supply Company store March 27 – April 7 to purchase a paper 4-H clover for \$1 at checkout and support 4-H in your community.

<https://www.canr.msu.edu/events/tractor-supply-co-paper-clover-campaign-1>

April 7: Mission to Mars

*Ingham County Fairgrounds, Mason*

Ever wanted to know what it was like to be an astronaut and travel to Mars? Now is your chance to think, eat and explore Mars just like a astronaut would!

<https://www.canr.msu.edu/events/mission-to-mars>

April 13: Michigan 4-H Goat Expo

*Anthony Hall, East Lansing*

The State 4-H Goat Expo is designed for 4-H members interested in live animal evaluation and testing their knowledge of the goat industry in a fun, educational manner.

<https://www.canr.msu.edu/events/2019-michigan-4-h-goat-expo>

April 26-28: Michigan 4-H Shooting Sports Instructor Certification Workshop

*Kettunen Center, Tustin*

All 4-H shooting sports clubs are supervised by certified 4-H shooting sports instructors. Attend to earn instructor certification in archery, rifle, shotgun, pistol or muzzle loader.

<https://www.canr.msu.edu/events/2019-michigan-4-h-shooting-sports-instructor-certification-workshop>

For the most up-to-date events listing, go to <http://4h.msue.msu.edu/events>.



## STATEWIDE NEWS AREA

### Ready to bring your fair projects home? Consider these tips as you prepare to purchase your livestock project!



*Author: Katie Ockert, 4-H animal science educator*

Acquiring new livestock is exciting, no matter if it is to build your herd or if it is the purchase of your annual 4-H project. Making sure to do your homework so that you are fully prepared is key in starting off on the right foot.

Michigan State University Extension recommends that you take the time to get all of the important health information about potential purchases from the seller and that you prepare animal housing facilities ahead of time. Taking these steps will help to make the transition to a new home as stress free as possible.

#### Assessing Animal Health and Treatment Documentation

When purchasing animals, it is important to know their history. Answering the following questions will help you make an informed purchase:

- 1) When was the animal born?
- 2) What vaccinations has the animal been given and when were they given?
- 3) Have any other treatments been administered to the animal (deworm, delouse, antibiotics, etc.)? If so, what is the withdrawal period for the drugs given?
- 4) Have any of the animals on the farm been ill or shown symptoms of illness?
- 5) If acquiring a market animal, what is the approximate weight?

#### Bringing New Stock Home

Once you make the decision to purchase new stock, there are many additional considerations to keep in mind. These include:

- 1) **Transportation.** If you do not own a trailer, you may need to make arrangements with the breeder or someone else that has a trailer to transport animals for you. Please remember that although some people may want to help you out free of charge, as a courtesy, you should be prepared to pay someone to provide transportation.
- 2) **Unloading.** Making sure that your facility is ready to acquire new livestock before they arrive is essential and can make the transition less stressful. Make sure that you have a pen identified for new animals to go into that is set up with water and appropriate feed when you arrive.
- 3) **Settling in.** Newly acquired animals should be quarantined, or kept away from other animals that are already housed on the premises, for a minimum of 21 days. The more physical space you can put in between animals, the better.
- 4) **Comingling.** When you are beginning to comeingle animals, remember that each specie has a herd hierarchy. It is important to make sure that hazards to animals as they establish their place in the herd or flock are kept to a minimum.

For more information about your 4-H animal science projects, visit [https://www.canr.msu.edu/animal\\_science/](https://www.canr.msu.edu/animal_science/).

### 4-H Show Your Money Smarts Contest



Learn about investments and put your knowledge to the test. Compete with others across the state in this online challenge during the entire month of April.

During this Money Smart Month contest, you can win prizes for both your county and yourself. High scoring youth will be entered into a prize drawing for a \$100 4-H event scholarship.

Learn more and register today at <https://www.canr.msu.edu/4-h-money-smarts/>.



# Proud Equestrian Program



## Meet & Greet



**When:** March 6, 2019

**Time:** 6:30 PM – 8:30 PM

**Where:** Isabella County Building, Room 320

(200 N. Main Street, Mount Pleasant MI, 48858)

**What:** Proud Equestrian Program (PEP) is a therapeutic riding program for youth with cognitive and physical disabilities

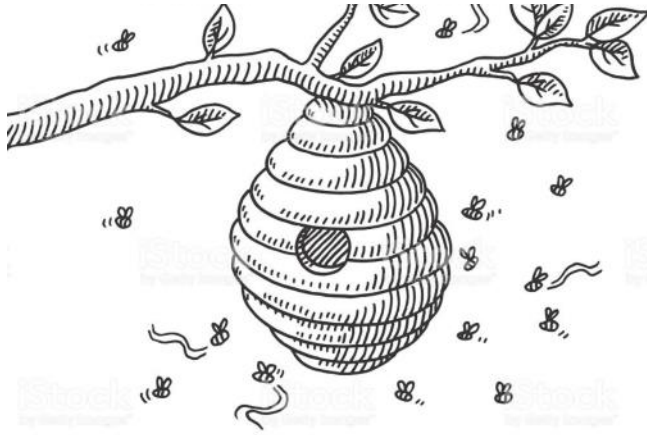
If you are seeking information about the Proud Equestrian Program, please plan to attend our meet and greet evening for horse education, rider safety education and fun!



The program will run June 11, 18, 25,  
July 9, 16 and 27.

Please register at the MSU Extension office  
by contacting Kristi Schreiber at:  
**[schrei61@anr.msu.edu](mailto:schrei61@anr.msu.edu) or 989-317-4079**

**MICHIGAN STATE**  
UNIVERSITY | **Extension**



# BEElievers 4-H Club

(bee keeping)

*If you are already in a 4-H Club, this can be your secondary club.*

**Want to find out what the buzz about bees is all about? This club is designed to teach about the ancient art of beekeeping. Begin learning about the importance of bees and travel through the world of bee development and behavior!**

## DATE

**March 13 - Wednesday  
from 6:00 PM - 8:00 PM**

## LOCATION

**Isabella County Building**  
(200 N. Main Street, Mt. Pleasant MI, 48858)

**3rd floor ○ Room 320**

## WHO

**For youth ages 8 - 19**



**For more information about the club, please contact Karl Geiger at [karlcgeiger@yahoo.com](mailto:karlcgeiger@yahoo.com) or (989) 506-2745.**



**MICHIGAN STATE  
UNIVERSITY**

**Extension**



MSU is an affirmative-action, equal-opportunity employer. Michigan State University Extension programs and materials are open to all without regard to race, color, national origin, gender, gender identity, religion, age, height, weight, disability, political beliefs, sexual orientation, marital status, family status or veteran status. "Accommodations for persons with disabilities may be requested by contacting the MSU Extension office at (989) 317-4079 at least 5 days prior to the scheduled event to ensure sufficient time to make arrangements. Requests received after this time will be met when possible.



# Junk Drawer Robotics

4-H Robotics Curriculum

## What

4-H Robotics is a series of activities designed to make science, engineering and technology engaging and meaningful in the lives of youth.

It focuses on emphasizing different aspects of robotics while youth build their own robots and develop robotics knowledge and skills.



## Who

For youth (ages 8-19)  
and volunteer leaders

## When

**March 19, 2019**  
6 PM - 8 PM

## Where

**Isabella County Building**  
**Room 320**  
200 North Main Street  
Mt. Pleasant, MI 48858

**To register:**

Contact MSU Extension at (989) 317-4079 by March 11



**MICHIGAN STATE**  
**UNIVERSITY** | **Extension**

MSU is an affirmative-action, equal-opportunity employer. Michigan State University Extension programs and materials are open to all without regard to race, color, national origin, gender, gender identity, religion, age, height, weight, disability, political beliefs, sexual orientation, marital status, family status or veteran status. Accommodations for persons with disabilities may be requested by contacting the MSU Extension office at (989) 317-4079 at least 5 days prior to the scheduled event to ensure sufficient time to make arrangements.

Requests received after this time will be met when possible.





## 4-H Sheep Nutrition and Judging

**DATE & TIME:**

Sunday,  
March 10, 2019  
1:00 pm—4:00 pm

**LOCATION:**

Ingham County  
Fairgrounds, Mason, MI-  
Community Hall

**COST: \$3.00**

**WHO SHOULD ATTEND:**

Youth and adults involved or interested in the sheep project area.

**DESCRIPTION:**

Topics covered will include: sheep nutrition, lamb selection, market lamb judging

**PRE-REGISTRATION BY MARCH 5, 2019**

Please RSVP at [weissgle@anr.msu.edu](mailto:weissgle@anr.msu.edu)

**CONTACT:**

Glenda Weiss at [weissgle@anr.msu.edu](mailto:weissgle@anr.msu.edu) or (517) 676-7303

**SPONSORS**

Ingham County Fair

Ingham County Farm Bureau



MSU is an affirmative-action, equal-opportunity employer, committed to achieving excellence through a diverse workforce and inclusive culture that encourages all people to reach their full potential. Michigan State University Extension programs and materials are open to all without regard to race, color, national origin, gender, gender identity, religion, age, height, weight, disability, political beliefs, sexual orientation, marital status, family status or veteran status. Persons with disabilities have the right to request and receive reasonable accommodations.

# Rejuvenate your Mind

Scrapbooking, Crafts, Fabric Projects, etc.

Saturday, April 27, 2019

9:30 AM—7:00 PM

At First Church of Christ

1610 E. Broadway, Mt. Pleasant



## \$55 WILL GET YOU:

- \* A goody bag worth over \$20
- \* 4 Make and Take Projects
- \* Handmade Gifts
- \* Morning Snacks, Lunch, and Dinner
- \* Your Own Table Space

## BRING YOUR OWN PROJECTS AND SUPPLIES TO WORK ON!

Use this opportunity as a “mental wellness” day — doing things you enjoy and visiting with others of like mind. We supply the space and logistics; you supply the project and/or activity!

## ALL PROCEEDS BENEFIT THE ISABELLA COUNTY YOUTH AND FARM FAIR SOCIETY'S MULTIPURPOSE BUILDING PROJECT

Include a group name if you'd like to guarantee a block of seats together.  
Send registration form below with your payment by check or credit card to Kim Vogel.  
RSVP by April 17 as space is limited — get your spot held soon!

Kim Vogel, Stampin' Up!   Kimsbasementbunch.com   (989) 506-1410   5783 E. Beal City Rd., Mt. Pleasant, MI 48858

NAME: \_\_\_\_\_

GROUP NAME (if applicable): \_\_\_\_\_

ADDRESS: \_\_\_\_\_

EMAIL: \_\_\_\_\_ PHONE: \_\_\_\_\_

PAYMENT: CREDIT CARD \_\_\_\_\_ CHECK \_\_\_\_\_

MASTERCARD \_\_\_\_\_ VISA \_\_\_\_\_ DISCOVER \_\_\_\_\_ CARD #: \_\_\_\_\_

EXP. DATE: \_\_\_\_\_ CVV: \_\_\_\_\_

DO YOU NEED ELECTRICITY? YES \_\_\_\_\_ NO \_\_\_\_\_

DIETARY CONCERNS/FOOD ALLERGIES? YES \_\_\_\_\_ NO \_\_\_\_\_

EXPLAIN: \_\_\_\_\_



Michigan State University Extension  
Isabella County  
200 N. Main Street  
Mt. Pleasant, MI 48858

Phone: (989) 317-4079

Fax: (989) 773-1622

Website:

<https://www.canr.msu.edu/isabella/>



Facebook

## **Isabella County Youth & Farm Fair July 20 - 27, 2019**

# **SAVE THE DATES**

**PEP Meet & Greet - March 6**

**Dairy Feeder Weigh-In - March 9**

**Junk Drawer Robotics - March 19**

**TSC Spring Paper Clover Campaign - March 27 - April 7**

**Shooting Sports Kick-Off Event - April 6**

**Swine Tagging - May 5**

**Sheep & Goat Weigh-In - May 11**

**4-H Exploration Days - June 19 - 21**

**Flower Arranging Workshop - June 26**

**4-H Summer (overnight) Camp - July 9 - 11**

**4-H Cloverbud Camp - July 16 & 17**

**Isabella County Youth & Farm Fair - July 20 - 27**

**Spa Gift Workshop - November 5**

## **Isabella County 4-H Calendar**

March 5	Teen Horse Leaders @ MSUE	6 PM
5	Horse Leaders @ MSUE	7 PM
9	Dairy Feeder Weigh-In @ Fairgrounds	8:30 - 11:30 AM
13	BEElievers Club Meeting @ MSUE	6 PM
19	Junk Drawer Robotics @ MSUE	6 PM
20	Shooting Sports Committee @ MSUE	7 PM
21	Small Animal Association @ MSUE	7 PM
26	4-H Council @ MSUE	7 PM

*MSU is an affirmative-action, equal-opportunity employer. Michigan State University Extension programs and materials are open to all without regard to race, color, national origin, gender, gender identity, religion, age, height, weight, disability, political beliefs, sexual orientation, marital status, family status or veteran status. Issued in furtherance of MSU Extension work, acts of May 8 and June 30, 1914, in cooperation with the U.S. Department of Agriculture. Jeffrey W. Dwyer, Director, MSU Extension, East Lansing, MI 48824. This information is for educational purposes only. Reference to commercial products or trade names does not imply endorsement by MSU Extension or bias against those not mentioned.*

*"Accommodations for persons with disabilities may be requested by contacting the MSU Extension office at (989) 317-4079 at least 5 days prior to the scheduled event to ensure sufficient time to make arrangements. Requests received after this time will be met when possible."*

**Kristi Schreiber, 4-H Program Coordinator**  
[schrei61@anr.msu.edu](mailto:schrei61@anr.msu.edu)

Nonie Gross, Secretary  
Paul Gross, Extension Educator  
Belinda Laughlin, Master Gardener Coordinator  
Kara Lynch, Extension Educator  
Sabrina McGee, SNAP-ED PI  
David Rowley, Extension Educator